

# Angle and Perspective

The angle, or perspective, is a visual technique used by illustrators and photographers to convey point of view.



Explain how the photographer has used elements of angle and perspective to help tell a story and convey a point of view.

---

---

---

Whose perspective was this image taken from?

---

What can you tell about the relationship between the people and animals in this image?

---

---

# Body Language and Gaze

The facial expressions, body gestures, stance and position of someone within an image can help to convey the attitude, feelings or personality of that person. These can also help to determine the relationship between characters.



Explain how the illustrator has used body language and gaze to help tell a story and communicate emotion.

---

---

---

What does the body language and gaze tell you about the relationship between these two people?

---

---

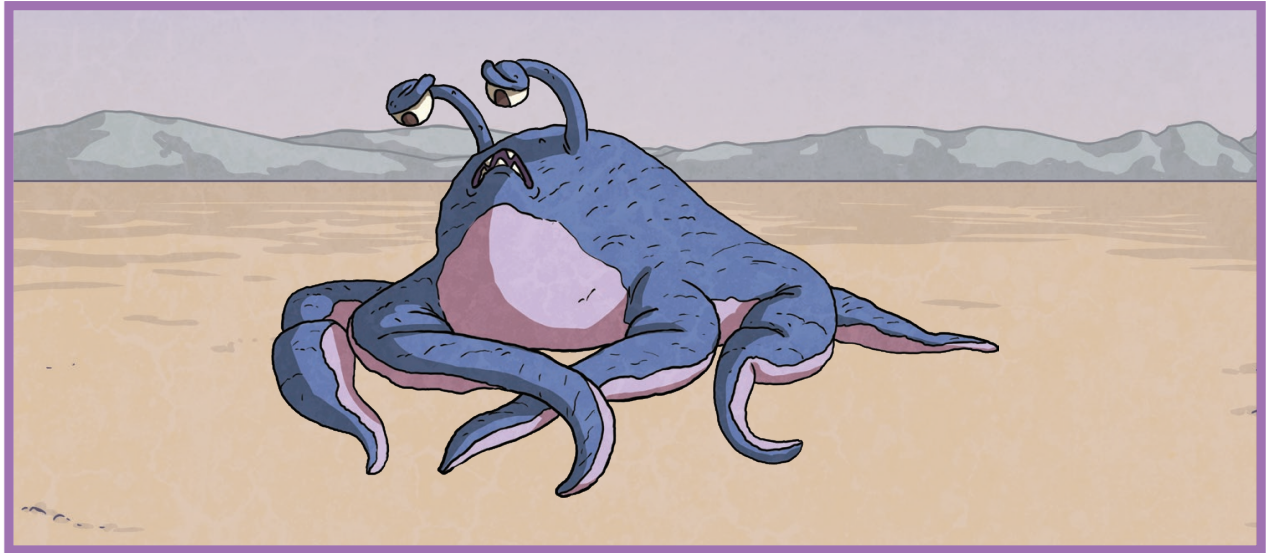
Explain what you think might have happened to these characters to make them look and act in this way?

---

---

# Colour

Colour can be used to express and develop ideas in images, to express feelings and emotions, and also to try to elicit a response in the reader or viewer.



How do you feel when you look at these colours?

---

---

Describe how the illustrator has used colour to help tell a story and communicate emotion.

---

---

---

Explain what you think might have happened to this character to make them look and act in this way?

---

---

# Framing

Framing refers to the way a photograph or image is portrayed using close-ups, extreme close-ups, medium shots, long shots and tilted up or down shots. These help to create a focus and determine importance within an image.



Name the object of most importance and explain how the photographer has used framing to help you identify it.

---

---

---

Framing helps to tell the story of this image by signifying importance and focus. If this image is the focus, what do you think is happening outside of the framing?

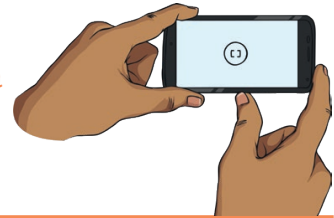
---

---

---

# Positioning

Positioning of elements within an image will help a viewer to discern the depth and size of the setting, as well as the importance of each element and the relationships between them.



Name the object of most importance and explain how the photographer has used positioning to help you identify it.

---

---

---

What can you tell about the depth and size of the setting based on the positioning of people and objects within the photograph?

---

---

---



# Salience

Salience refers to the part of an image that your eyes are first drawn to. It uses elements of colour, placement, size and layout to draw that focus and determine what is most important in an image.



What is the salient object or focus of this photograph?

---

Which elements have been used to create saliency in this image?

---

---

---

Why do you think this image has been portrayed this way? Why could that object be the most important?

---

---

---