

Name:

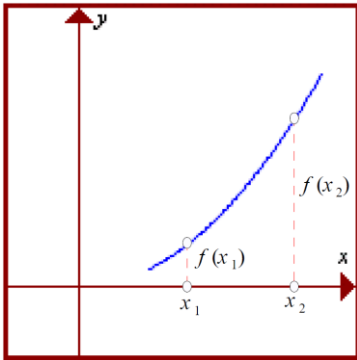
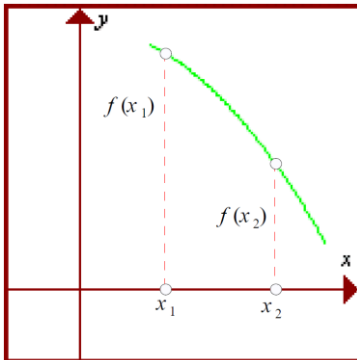
Date:

3 – 4.1 Increasing and Decreasing Functions

Lesson Goals:

- Be able to determine when a function is increasing or decreasing

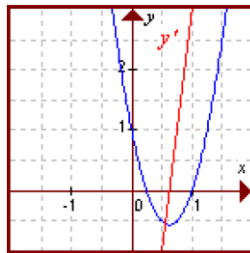
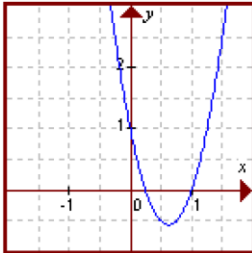
1) Increasing and Decreasing Function

Increasing Function	Decreasing Function
<p>f is increasing on an interval I if $f(x_1) < f(x_2)$ whenever $x_1 < x_2$ in I</p> 	<p>f is decreasing on an interval I if $f(x_1) > f(x_2)$ whenever $x_1 < x_2$ in I</p> 

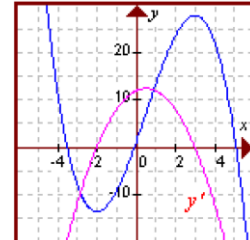
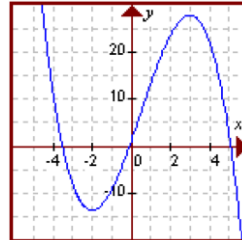
- How to test for increasing and decreasing functions:
 - If $f'(x) > 0$ for all x on an interval I , then f is increasing on I .
 - If $f'(x) < 0$ for all x on an interval I , then f is decreasing on I .

Example 1: Find the intervals of increase or decrease of each of the following functions.

a) $y = 4x^2 - 5x + 1$



b) $y = -\frac{2}{3}x^3 + x^2 + 12x - 1$



Example 2: Determine where $y = (x + 1)^4 e^{-x}$ is increasing or decreasing.

Example 3: Determine when $y = (\ln(x))^2$ is increasing or decreasing.

Example 4: Determine where $y = \sin 2x$ is increasing or decreasing on the interval $[0, 2\pi]$.

Homework: Page 169 #1, 3-8, 9 (skip iii.), 10