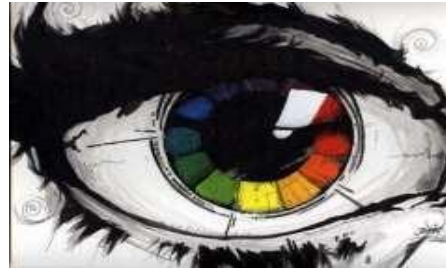


Name \_\_\_\_\_

## Create a color wheel in an eye



A1.1, A1.2, A2.1 C1.2 C2.1

Criteria	Level 1 (50-59%)	Level 2 (60-69%)	Level 3(70-79%)	Level 4 (80-100%)
<b>Knowledge and Understanding</b> (Understanding of primary/secondary/tertiary colors, drawing proportions)	Demonstrates limited understanding of color theory and proportions; guidelines are incomplete or incorrect.	Demonstrates some understanding of color theory and proportions, minor inaccuracies in guidelines.	Demonstrates good understanding of color theory and mostly accurate use of proportions and guidelines.	Demonstrates thorough understanding of color theory and precise use of proportions and guidelines in the eye structure.
<b>Thinking</b> (Planning and problem solving in mixing colors, shading, and creating gradients)	Limited or ineffective strategies for gradients, shading, and color transitions; lacks coherence.	Some attempt to solve problems in gradients, shading, or color transitions; results are uneven.	Applies effective strategies for gradients, shading, and color transitions, with minor inconsistencies.	Effectively apply problem-solving strategies to achieve smooth gradients, accurate shading, and correct color transitions.
<b>Communication</b> (Visual clarity, creativity, and expressive elements of the artwork)	Artwork lacks clarity and creativity; fails to effectively communicate the intended details.	Artwork communicates some details but lacks clarity or creativity in certain areas.	Artwork is engaging and communicating. the intended details with minor gaps in clarity or expressiveness.	Artwork is highly expressive and visually engaging; clearly communicates the intended realistic or creative details of the eye.
<b>Application</b> (Use of tools, materials, and techniques to create the eye and color wheel)	Demonstrates limited use of tools and techniques; artwork appears rushed or lacks refinement.	Demonstrates basic use of tools and techniques; errors in detail, neatness, or execution are evident.	Demonstrates proficient use of tools and techniques, with some minor errors in detail or neatness.	Demonstrates skillful use of tools (ruler, pencil, paints) and techniques (mixing, shading, outlining) with attention to detail and neatness.