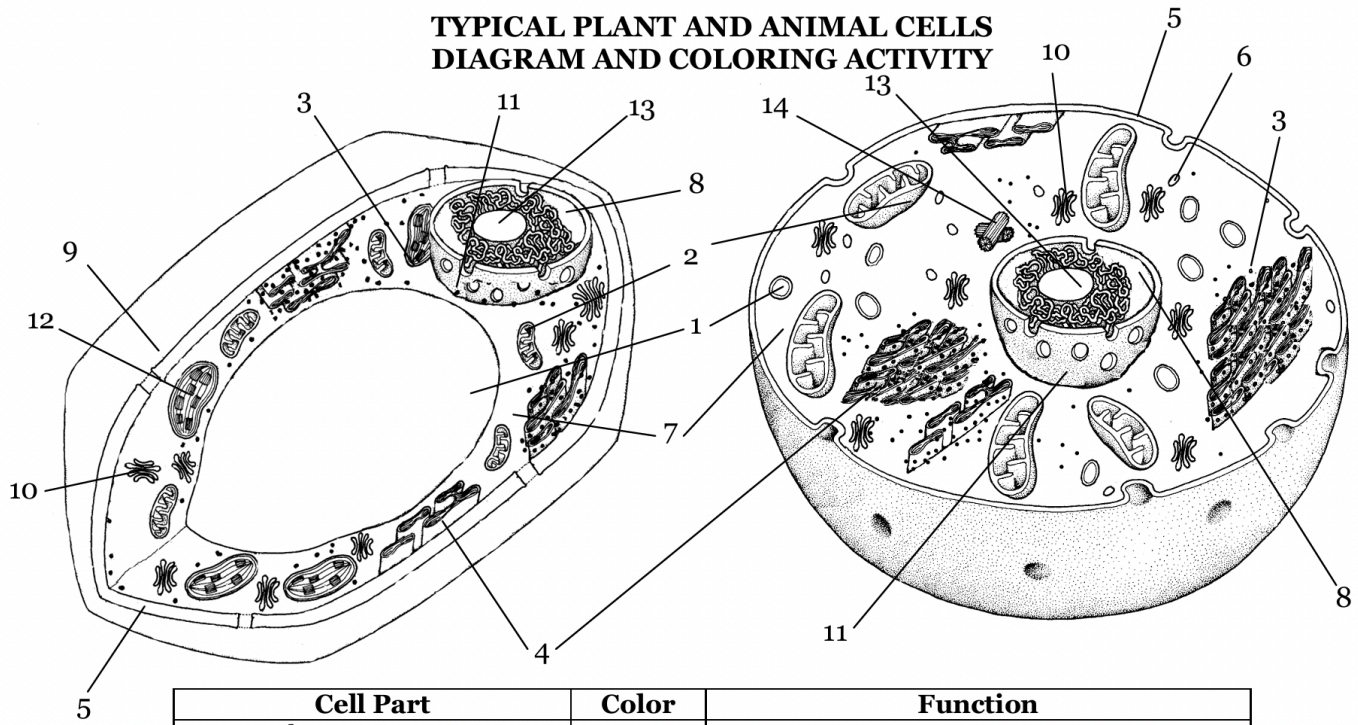


Name _____

Date _____

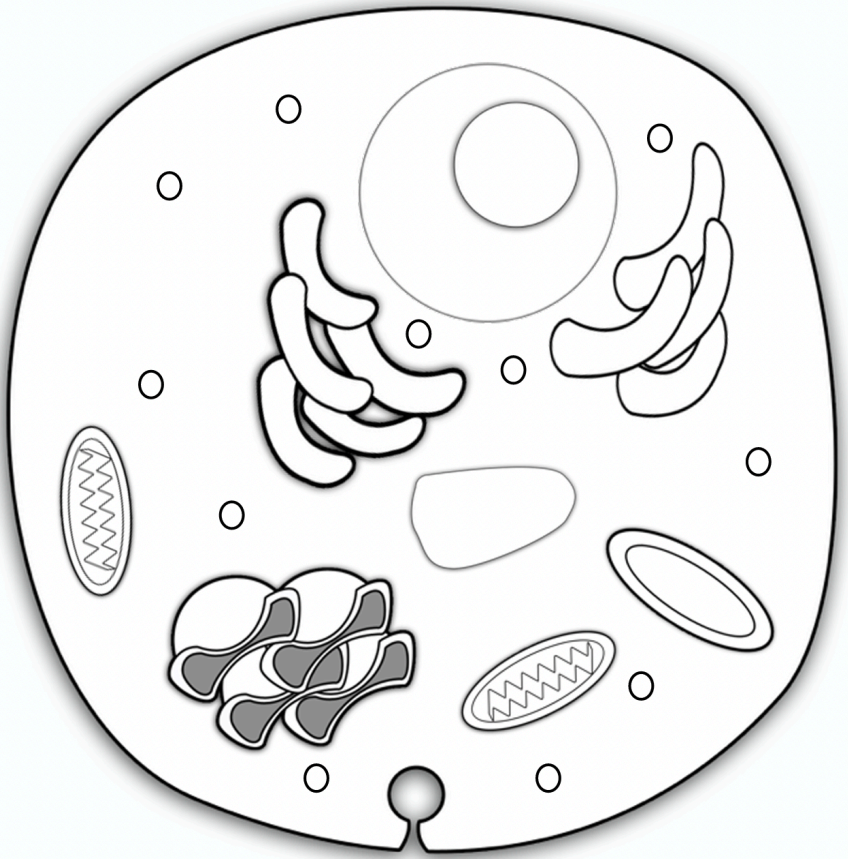
**TYPICAL PLANT AND ANIMAL CELLS
DIAGRAM AND COLORING ACTIVITY**



Cell Part	Color	Function
1. Vacuole	Grey	
2. Mitochondria	Orange	
3. Ribosome	Black	
4. Endoplasmic Reticulum	Dark Blue	
5. Cell Membrane	Red	
6. Lysosome	Light Green	
7. Cytoplasm	Yellow	
8. Nucleus	Light Purple	
9. Cell Wall	Brown	
10. Golgi Body	Light Blue	
11. Nuclear Membrane	Pink	
12. Chloroplast	Dark Green	
13. Nucleolus	White	
14. Centriole	Dark Purple	

Animal Cell

Organelle	Color
Cytoplasm	Light Blue
Nucleus	Light Purple
Nucleolus	Dark Purple
Mitochondria	Pink
Golgi Body	Orange
Lysosome	Yellow
Ribosomes	Black
Endoplasmic Reticulum	Red
Vacuole	Gray
Cell Membrane	Dark Blue



Plant Cell

Organelle	Color
Cytoplasm	Light Blue
Nucleus	Light Purple
Nucleolus	Dark Purple
Mitochondria	Pink
Golgi Body	Orange
Chloroplasts	Light Green
Ribosome	Black
Endoplasmic Reticulum	Red
Vacuole	Gray
Cell Membrane	Dark Blue
Cell Wall	Dark Green

