

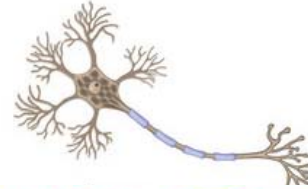
Topic 8: Hierarchical Organization



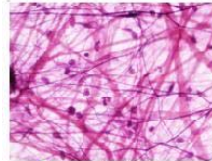
Simplest → Complex

Atom →

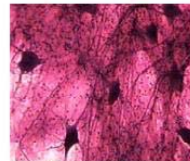
Cells:



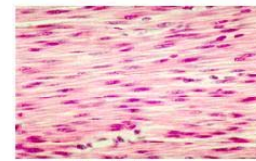
Tissues:



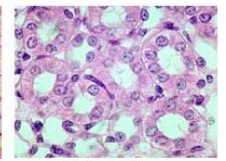
Connective tissue



Nervous tissue

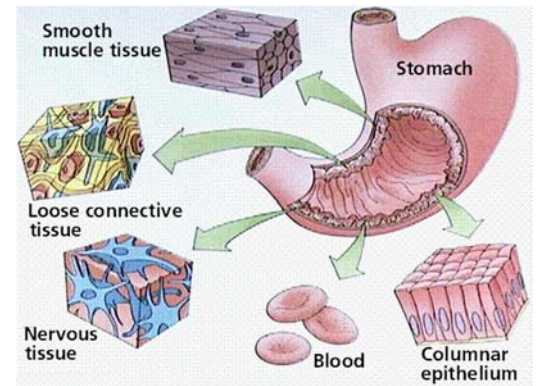


Muscle tissue

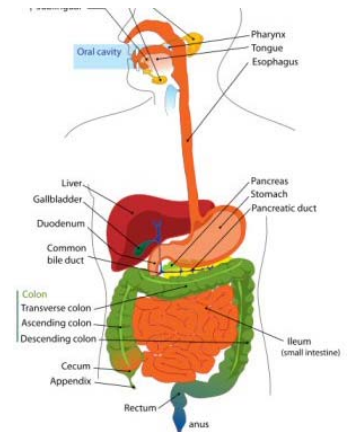


Epithelial tissue

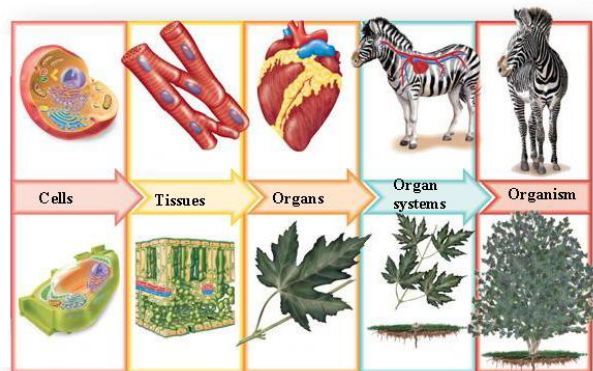
Organs:

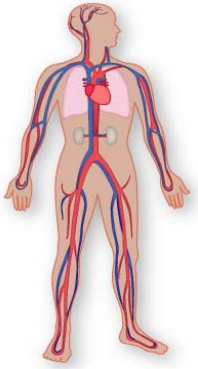
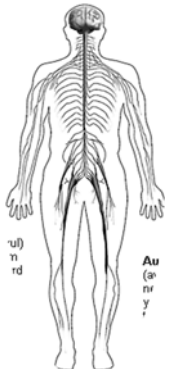
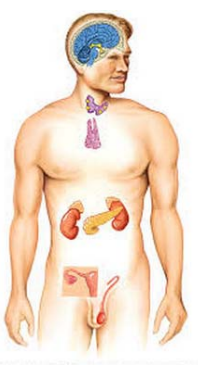
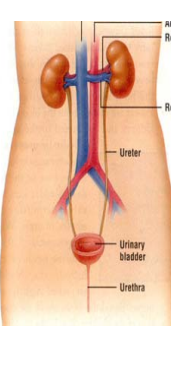
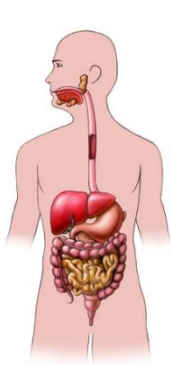

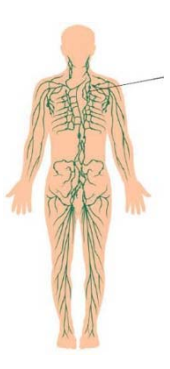
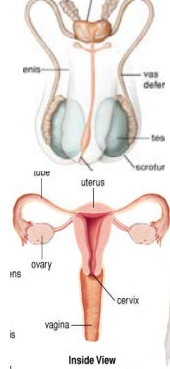
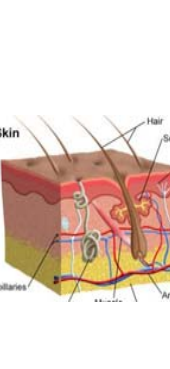
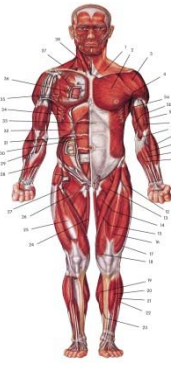
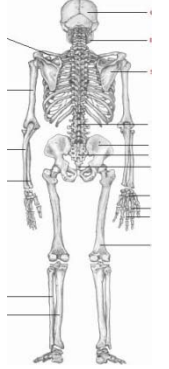


Organ Systems:



Copyright © The McGraw-Hill Companies, Inc. Permission required for reproduction or display.



System	 <p>Circulatory</p>	 <p>Nervous</p>	 <p>Endocrine</p>	 <p>Excretory</p>	 <p>Digestive</p>	 <p>Respiratory</p>	 <p>Lymphatic</p>	 <p>Reproductive</p>	 <p>Integumentary</p>	 <p>Muscular</p>	 <p>Skeletal</p>
Function											
Main Organs											